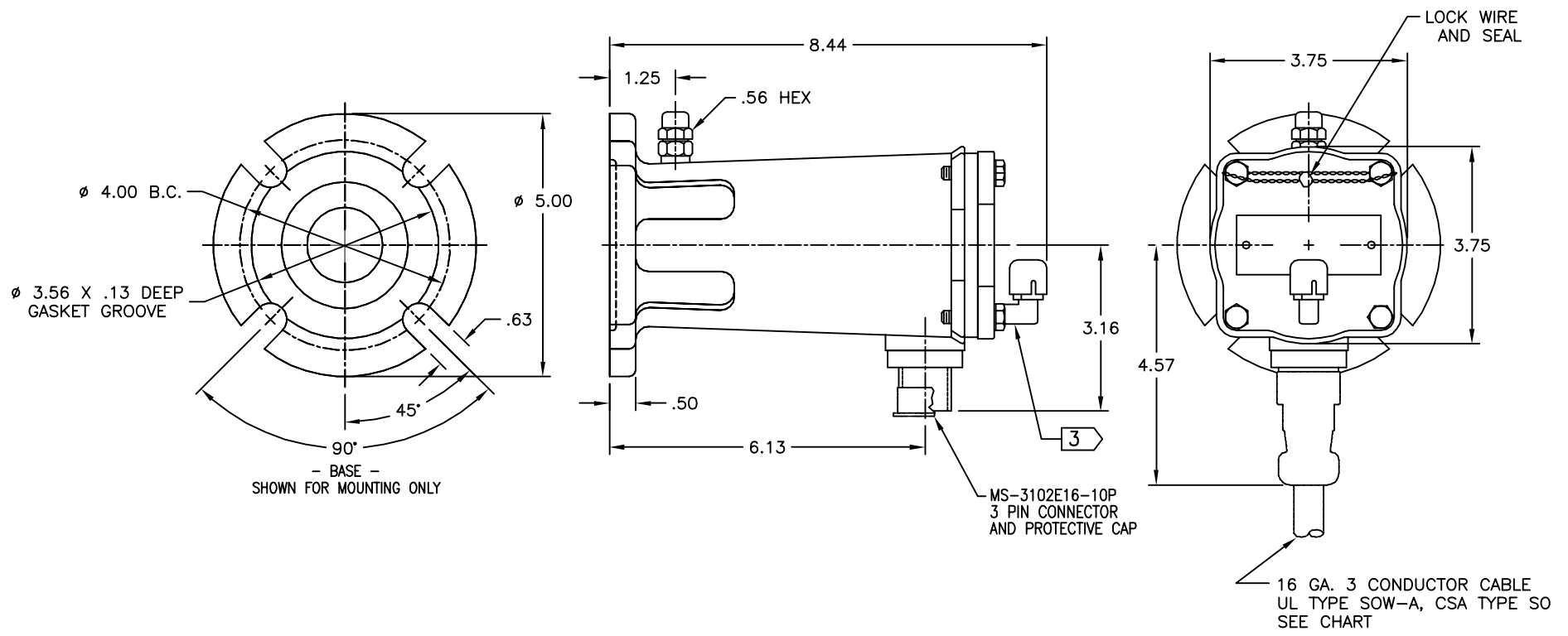


NOTICE

THIS DRAWING IS THE PROPERTY OF QUALITROL CORPORATION AND IS LOANED ONLY ON THE CONDITION THAT IT WILL BE USED TO FACILITATE THE PURPOSE FOR WHICH INTENDED AND NOT BE REPRODUCED, COPIED OR OTHERWISE DISPOSED OF, AND IS NOT TO BE USED IN WHOLE OR PART FOR FURNISHING INFORMATION RELATIVE TO THE MAKING OF DRAWINGS, PARTS APPARATUS OR PARTS THEREOF, EXCEPT BY WRITTEN ORDER FROM QUALITROL CORPORATION.

MODEL NO. **900-003**

- NOTES:
1. MEETS QUALITROL PRODUCT PERFORMANCE SPECIFICATION PPS-9.
 2. FOR OIL SPACE INSTALLATION ONLY
- ③ UNIT MUST BE MOUNTED HORIZONTALLY WITH VENT UP AS SHOWN.

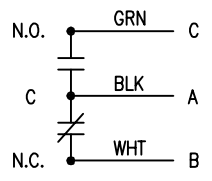


26330	11-12-07	900-003-69	—	YES	180 IN.	INCLUDES ADD'L VENT
26330	11-12-07	900-003-68	—	YES	0.0 IN.	INCLUDES ADD'L VENT
26330	11-12-07	900-003-67	—	YES	240 IN.	INCLUDES ADD'L VENT & LIQUID TITE CONDUIT FITTING
26330	11-12-07	900-003-66	—	YES	72 IN.	INCLUDES ADD'L VENT
26330	11-12-07	900-003-65	—	YES	120 IN.	INCLUDES ADD'L VENT
26330	11-12-07	900-003-64	—	YES	96 IN.	INCLUDES ADD'L VENT
26330	11-12-07	900-003-63	—	YES	48 IN.	INCLUDES ADD'L VENT
26330	11-12-07	900-003-62	—	NO	—	INCLUDES ADD'L VENT
26330	11-12-07	900-003-02	—	NO	—	REPLACES 900-003-01
OBSOLETE 17074, 6/17/96		900-003-01	—	NO	—	—

SWITCH RATINGS

- 15 AMP @ 125, 250, 480 VAC
- .5 AMP @ 125 VDC - NON-INDUCTIVE
- .25 AMP @ 250 VDC - NON-INDUCTIVE

WIRING DIAGRAM



REVISION	MODEL NUMBER	LOW TEMP. TEST	CONNECTOR ASSEMBLY	CABLE LENGTH	REMARKS
—	11-12-07	6.13 & 8.44 WERE 6.00 & 8.31		26330	
—	5-15-02	ADDED ADAPTOR UNDER 'MS' CONNECTOR: 3.16 DIM WAS 2.84 & 4.57 DIM WAS 4.25		22840	
—	6-17-96	REDRAWN WAS 'B' SIZE, 3.75 WAS 3.56 (2 PLCS)		17074	
LET	DATE	ALTERATION	C.N.		

QUALITROL CORPORATION

DIMENSIONS AND TOLERANCES IN ACCORDANCE WITH ASME Y14.5M-1994

PH. (585) 586-1515
 FAX (585) 377-0220
 1385 FAIRPORT ROAD
 FAIRPORT, NY 14450
 FORM 0-473 REV.D 10/22/02

TITLE: **RAPID PRESSURE RISE RELAY (OIL)**

MODEL NO. **900-003**

SH 1 OF 2