

PART NO.

R-760

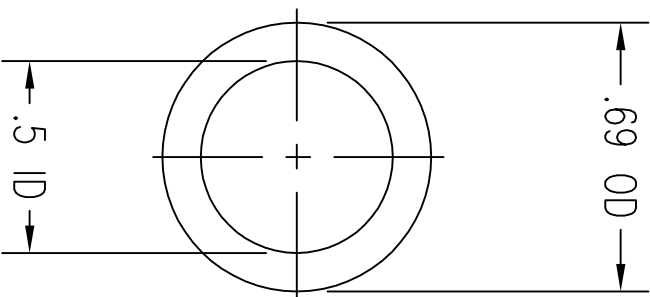
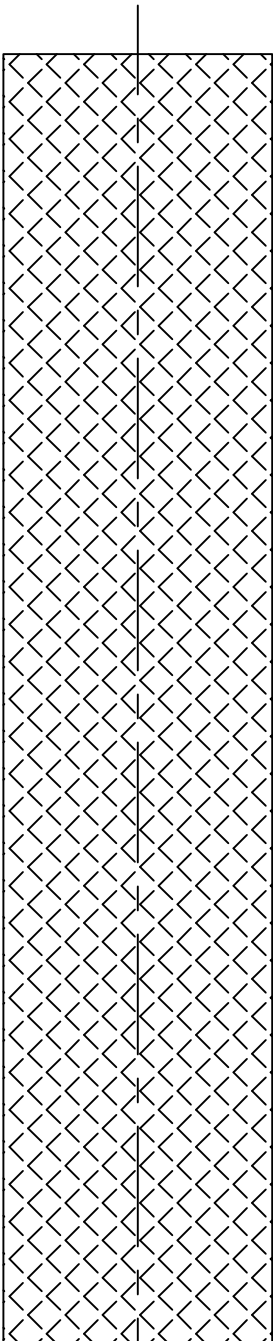
QUAN

PART NUMBER

DESCRIPTION

PROPRIETARY NOTICE

THE DESIGN AND TECHNICAL INFORMATION APPEARING ON THIS DRAWING IS THE PROPERTY OF HALTEC CORP. AND IS DISCLOSED IN CONFIDENCE. IT IS NOT TO BE COPIED, REPRODUCED, REVEALED TO OR APPROPRIATED BY OTHERS, EITHER IN WHOLE OR IN PART WITHOUT THE EXPRESS PRIOR WRITTEN CONSENT OF HALTEC CORPORATION.



MAX. OPERATING PRESSURE 1000 PSI
MINIMUM BEND RADIUS 5.0"
SERVICE TEMPERATURE -20° F TO 200° F
RESISTANT TO OILS AND SOLVENTS

MATERIAL	SYNTHETIC REINFORCED THERMOPLASTIC HOSE										FINISH		SCALE 2"=1"	SUPER LARGE BORE HOSE	
	CHANGE DATE	A	B	C	D	E	F	G	H	J	K	DRAWN			CKED
REF.												3/7/2012			
UNLESS OTHERWISE SPECIFIED															
ANGLE DIMENSIONS		±2°		MM		.XX=±.38		INCH		.XX=±.015		ANY PATENTABLE INVENTION SHOWN ON THIS DRAWING AND ANY PATENTS WHICH MAY BE OBTAINED FOR THE SAME BELONG WHOLLY TO			
FRACTIONS		±1/64"		.XX=±.13		.XXX=±.005		HALTEC				PART NO.		R-760	