

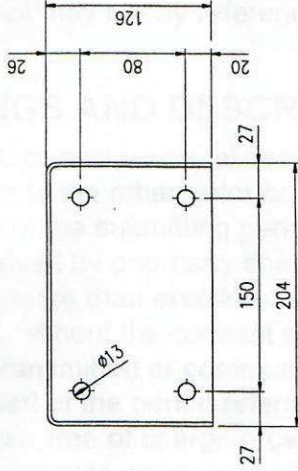
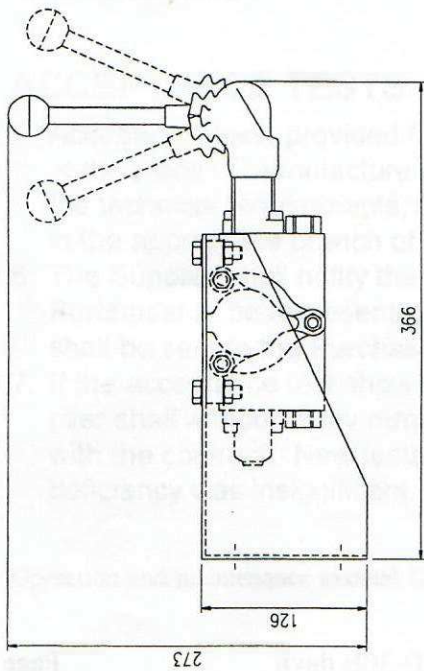
ALL FITTINGS TO BE ACC. TO SAE J 514, TRIPLE-LOCK JIC, 37.5° FLARED.
 ALL HOSES TO COMPLY TO THE FOLLOWING STANDARD: 25N DIN 200 22

HD 22/HD 25/HD 30: LIST OF FITTINGS/HOSES

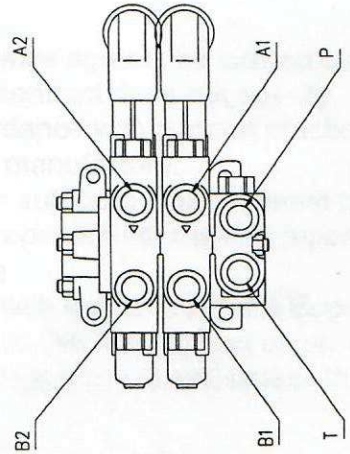
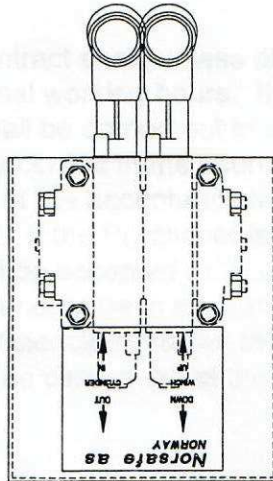
CONNECTION PORT:	P	T	A1/B1 CYL.	A2/B2 WINCH
FITTING TYPE:	1/2" BSP-	1/2" BSP-	1/2" BSP-	1/2" BSP-
HOSE DIM:	7/8"-14JIC	1 1/16"-12JIC	3/4"-16JIC	7/8"-14JIC
HOSE END 1 (VALVE END)	1/2"	3/4"	3/8"	1/2"
HOSE END 2 (PIPING END)				
PIPE DIM FOR HOSE END 2:	Ø16	Ø20	Ø12	Ø16

HD 33/HD 40: LIST OF FITTINGS/HOSES

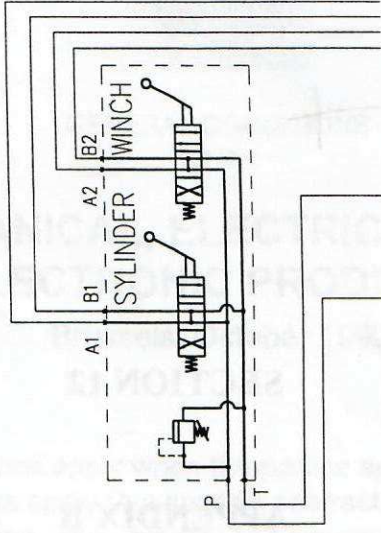
CONNECTION PORT:	P	T	A1/B1 CYL.	A2/B2 WINCH
FITTING TYPE:	1/2" BSP-	1/2" BSP-	1/2" BSP-	1/2" BSP-
HOSE DIM:	7/8"-14JIC	1 1/16"-12JIC	3/4"-16JIC	7/8"-14JIC
HOSE END 1 (VALVE END)	3/4"	1"	1/2"	3/4"
HOSE END 2 (PIPING END)				
PIPE DIM FOR HOSE END 2:	Ø20	Ø25	Ø16	Ø20



FLANGE ON BRACKET
 BRACKET TO BE FIXED USING
 4 x M12 STAINLESS STEEL BOLTS

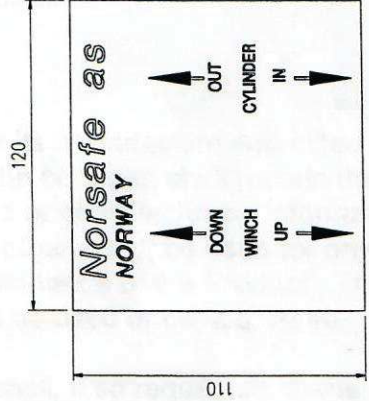


BOTTOM VIEW OF CONTROL VALVES
 SHOWN WITHOUT FITTINGS
 ALL CONNECTIONS: 1/2" BSP



NOTES:

- BRACKET AND MARKING PLATES TO BE MADE OF AISI 316 STAINLESS STEEL
- ALL ITEMS TO BE FULLY ASSEMBLED PRIOR TO SHIPMENT.
- JIC-FITTINGS INSTALLED BY HYDRAULIC SUBCONTRACTOR.
- ALL CONTROL VALVES TO BE EQUIPPED WITH "MINI-MES" CONNECTION, 16x1.5mm THREADS, FOR TEST PRESSURE GAUGE CONNECTION.



DETAIL OF MARKING SCALE 1:1
 PLATE TO BE MADE OF AISI 316

ISSUE No.	ISSUED FOR CONSTRUCTION	MODIFICATION	Drum	Drum	Appr. 1	DATE
0			VP	NI/0		12.02.88

DRAWN	CHECKED	NIH	DATE

SCALE	1:2
DRAWING No.	HD-GT-13
FLED	

Norsafe as
 Jørgensen og Vik A/S
 P.O. Box 115, N-4818 FERØK, NORWAY

TITLE
 NORSAFE HYDRAULIC DAVITS
 CONTROL VALVES WITH BRACKET
 SUPPLY BY BERENDSEN
 GENERAL ARRANGEMENT