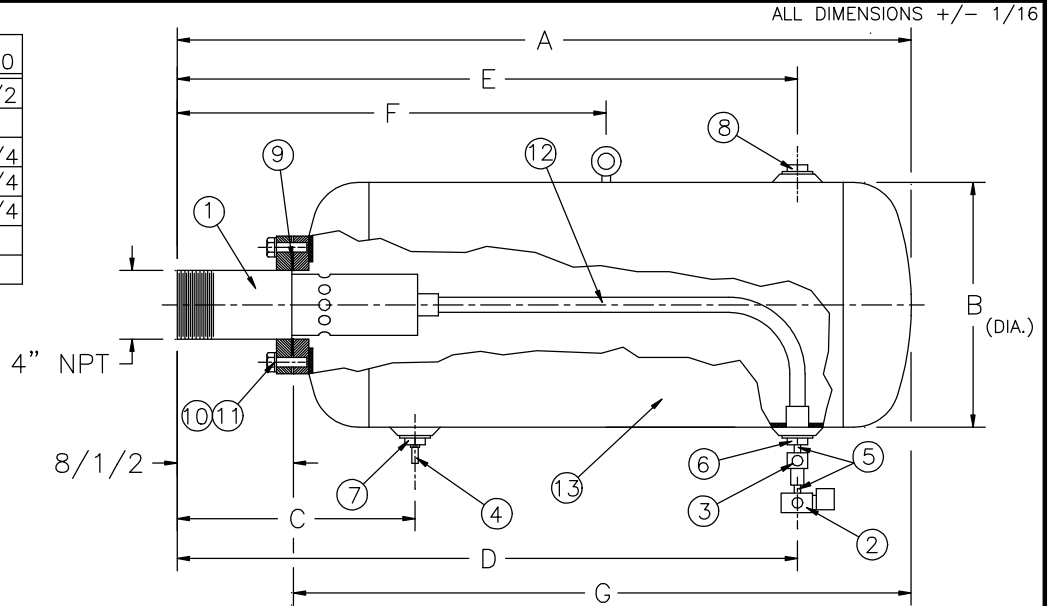


MODEL	ABS4-2	ABS4-5	ABS4-10
A	32	48	52-1/2
B	ø12	ø16	ø24
C	14-1/2	15-1/2	17-3/4
D	25-1/2	40-1/2	41-3/4
E	25-1/2	40-1/2	41-3/4
F	20-1/2	28-1/2	30
G	23-1/2	39-1/2	44

ALL DIMENSIONS IN INCHES



ITEM #	QUAN.	PART NO.			DESCRIPTION	SPEC.
		ABS4-2	ABS4-5	ABS4-10		
13	1	4ABS15-1	4ABS15-2	4ABS15-3	TANK	
12	1	3/4X24	3/4X45	3/4X45	HOSE	
11	8	5/8LW			LOCKWASHERS	
10	8	5/8-11X2HH			HEX HEAD BOLTS	
9	1	4X125			GASKET	
8	1	2"PLUG			PIPE PLUG	
7	1	4ABS12-2			RELEASE BUSHING	
6	1	4ABS11			FILLER BUSHING	
5	2	1/2CLOSE			CLOSE NIPPLE	1/2 NPT
4	1	2ABS13			SAFETY VALVE	
3	1	QE4			QUICK EXHAUST VALVE	
2	1	2ABS12			SOLENOID VALVE	
1	1	4ABS01-4			NOZZLE ASSEMBLY	

NO.	QTY.	PART #	DESCRIPTION	SPECIFICATION
AC		ABS4-2 ABS4-5 ABS4-10	AIR CANNON	NONE
APPROVED BY:				MODEL
DATE:				DRAWING NO.
1-30-15		VIBCO, INC. 75 Stilson Rd. Wyoming, RI 02898		4ABS45R1 -B