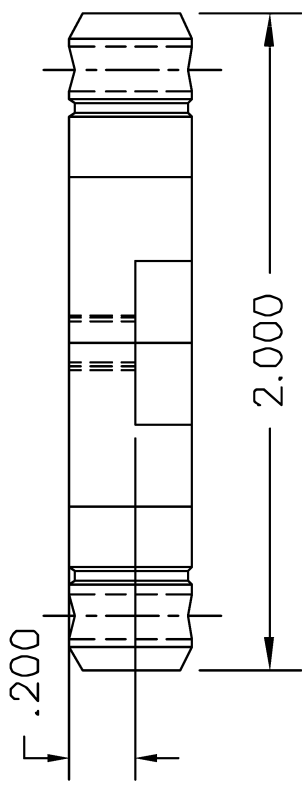


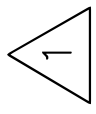
| REVISIONS | | | |
|-----------|---------------|---------------|----------------|
| REV. SYM. | E.C.O. NUMBER | DESCRIPTION | APP'D DATE |
| 3 | | G355 WAS G659 | JWJ 4/19/02 |
| | | | RRR 4/19/02 |

**UNCONTROLLED DOCUMENT
WILL NOT BE UPDATED**



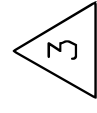
2 .128 HEX ACROSS FLATS

1 .151 HEX ACROSS FLATS



1 USE GAGE G187

2 .166 HEX ACROSS FLATS



2 USE GAGE G155

3 USE GAGE G355

NOTES:

| | | | | | |
|--|------------|--------------------|--------------|---------|--|
| <p>RESTRICTED & CONFIDENTIAL</p> <p>CONFIDENTIAL PROPERTY OF DANIELS MANUFACTURING CORP. NOT TO BE DISCLOSED TO OTHERS. REPRODUCED OR USED FOR ANY OTHER PURPOSE, EXCEPT AS AUTHORIZED IN WRITING BY DANIELS MANUFACTURING. MUST BE RETURNED TO DANIELS MANUFACTURING CORP. ON COMPLETION OF ORDER OR OTHER PURPOSE FOR WHICH SENT.</p> | MATERIAL | ITEM | PART NO. | QTY. | DESCRIPTION/REMARKS |
| | HEAT TREAT | DRN. D.DEPAIVA | DATE 8-19-94 | | <p>DMC</p> <p>DANIELS MANUFACTURING CORP. ORLANDO, FLORIDA FSCM 11851</p> |
| FINISH | CHK'D. DE | DATE 8/94 | | | |
| <p>DO NOT SCALE DRAWING</p> | | APP'D. | DATE | | TITLE |
| | | APP'D. | DATE | | DIE SET ENVELOPE DRAWING |
| <p>NOTE: THIS DRAWING IS AN OUTLINE DRAWING OF THE RESPECTIVE DMC PART NUMBER INDICATED. ACTUAL DMC PART NUMBER IS DRAWING NUMBER WITHOUT THE "-ENV" SUFFIX.</p> | | <p>WHERE USED:</p> | | SIZE | CAD FILE NO |
| | | | | A | Y334-ENV |
| | | | | POSTING | DWG. NO. |
| | | | | | Y334-ENV |
| | | | | | SHEET OF |
| | | | | | 1 |
| | | | | | REV. |
| | | | | | 3 |