



Mechanical Specifications:

Manufacture metal case (line connectors according to IEC 320).
Connections IEC 320 - Standard plug (1N): 6,3 x 0,8 mm (OUT) ground terminal connected to case.

Electrical specifications:

Rated voltage (Vr) max 250 V to 400 Hz
Rated current (Ir)* referred to room temp.= 40°C $\leq 0,8$ mA
Leakage current (Il) $\leq 0,8$ mA
Voltage test (Zs.) line to ground 2250 Vdc
Line to line 1450 Vdc
Category climatica HPF (25/085/21) -25°C to +85°C

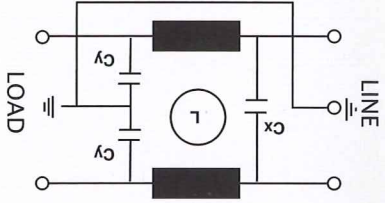
Caratteristiche elettriche:

Tensione nominale (Vr) max. 250V~ a 400 Hz
Corrente nominale (Ir)* riferita ad una temp. di 40°C $\leq 0,8$ mA
Corrente di fuga (Il) $\leq 0,8$ mA
Tensione di prova (Zs.) linea e massa 2250 Vdc
linea e linea 1450 Vdc
Category climatica HPF (25/085/21) -25°C a +85°C

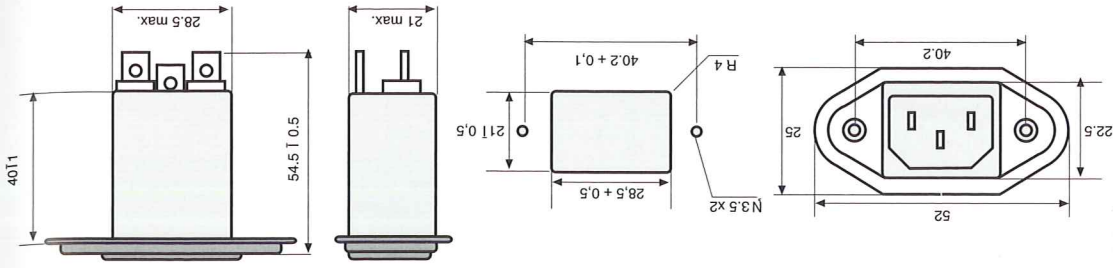
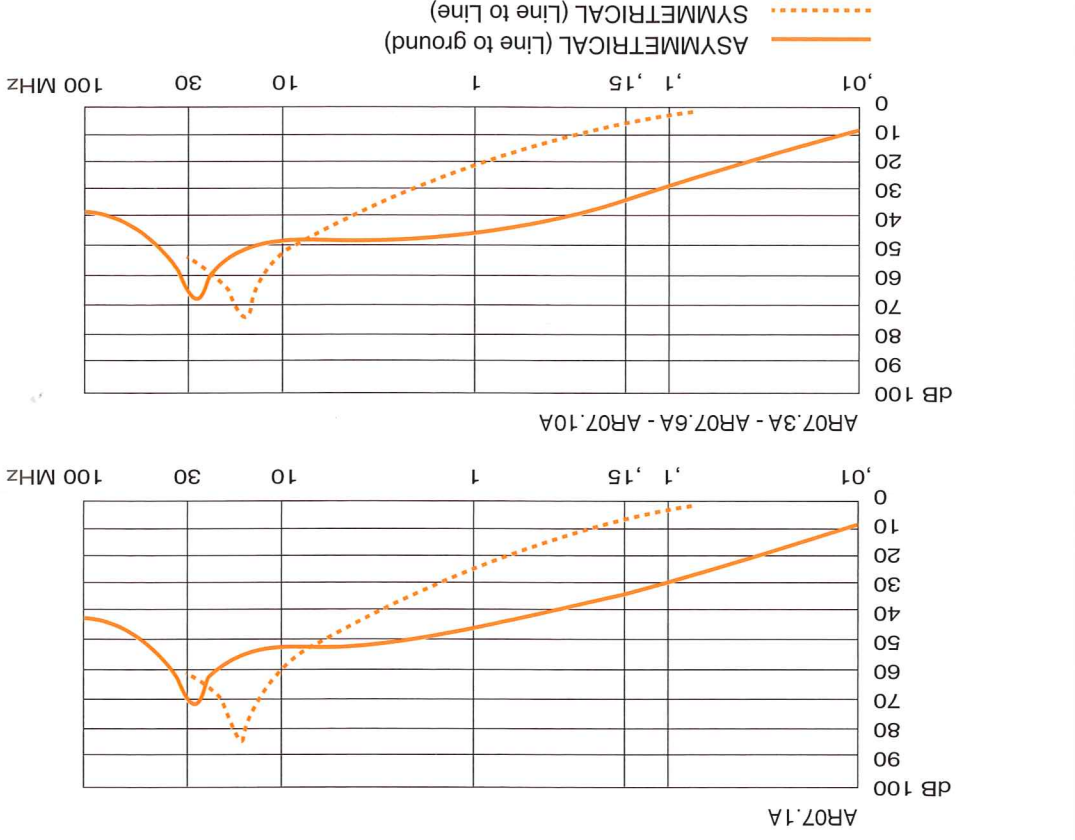
Termini Ingresso presa rete IEC 320, uscita Faston 6,3 x 0,8 mm
 terminale di terra collegato al contenitore.

Caratteristiche tecniche:

Costruzione Custodia metallica (presa rete IEC320).



Circuit diagram



Dimensions



Mechanical Specifications:

Manufacture plastic case or metal case and line connector with 1 or 2 fuses. Internal components sealed with self-extinguishing resin Vo
Connections Faston 6,3 x 0,8 mm

Electrical specifications:

Rated voltage (Vr) max 250 V to 400 Hz
Rated current (Ir)* referred to room temp.= 40°C $\leq 0,6$ mA circuit C $\leq 0,02$ mA
Leakage current (Il) $\leq 0,6$ mA
Voltage test (Zs.) line to ground 3000Vdc
or 1800 Vdc
line to line 1700 Vdc
Category climatica HPF (25/085/21) -25°C to +85°C

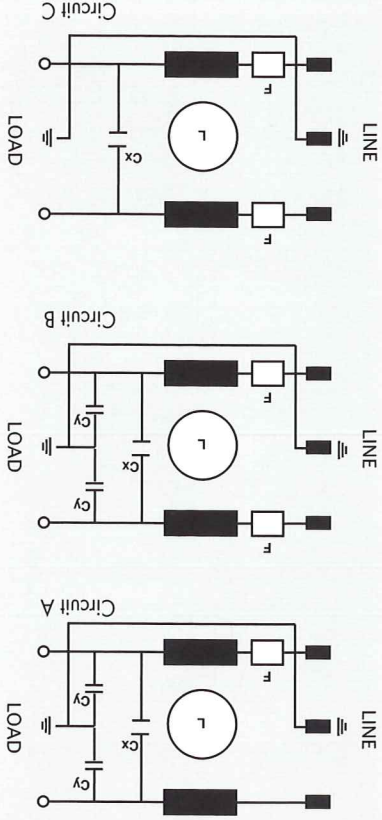
Caratteristiche elettriche:

Tensione nominale (Vr) max. 250V~ a 400 Hz
Corrente nominale (Ir)* riferita ad una temp. di 40°C $\leq 0,6$ mA
Corrente di fuga (Il) $\leq 0,6$ mA circuit C $\leq 0,02$ mA
Tensione di prova (Zs.) linea e massa 3000Vdc
o 1800 Vdc
linea e linea 1700 Vdc
Category climatica HPF (25/085/21) -25°C a +85°C

Caratteristiche tecniche:

Costruzione Custodia plastica o metallica e presa rete con 1 o 2 fusibili. Componenti interni sigillati con resina autoestinguente Vo
Terminali Faston 6,3 x 0,8 mm

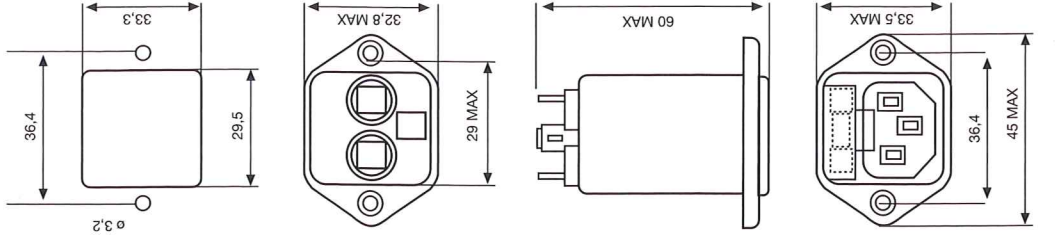
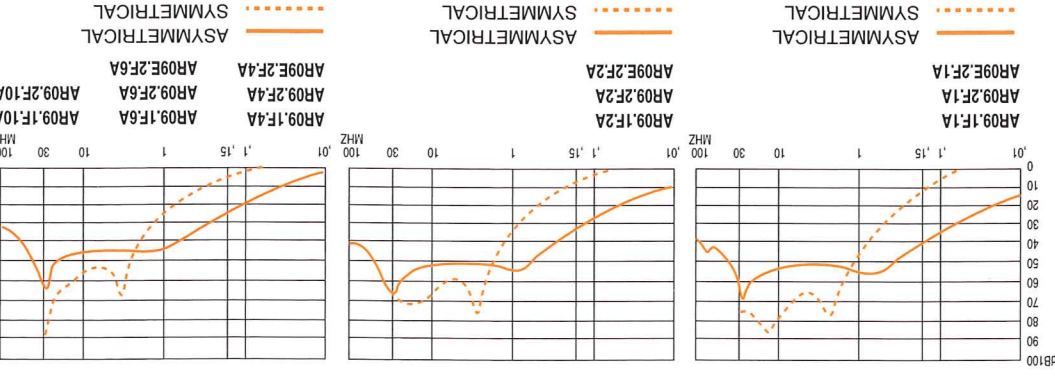
Circuit diagram



ME = Metal case
 PL = Plastic case

Code	IR (A)*	Cx (µF)	Cy (pF)	L (mH)	Circuit
AR09.1F.1A..	1	0,1	2500	6	A
AR09.1F.6A..	6	0,1	2500	1	A
AR09.1F.4A..	4	0,1	2500	1	A
AR09.1F.2A..	2	0,1	2500	2	A
AR09.2F.1A..	1	0,1	2500	6	B
AR09.2F.6A..	6	0,1	2500	1	B
AR09.2F.4A..	4	0,1	2500	1	B
AR09.2F.2A..	2	0,1	2500	2	B
AR09.2F.10APL	10	0,1	2500	1	B
AR09.2F.10APL	10	0,1	2500	0,35	C
AR09.2F.1A..	1	0,1	2500	6	C
AR09.2F.6A..	6	0,1	2500	1	C
AR09.2F.4A..	4	0,1	2500	1	C
AR09.2F.2A..	2	0,1	2500	2	C
AR09.2F.10A..	10	0,1	2500	1	C
AR09.2F.10A..	10	0,1	2500	0,35	C

Dimensions





Mechanical Specifications:

Manufacture metal case (line connectors according to IEC 320).
Connections IEC 320 - Standard plug (IN); 6.3 x 0.8 mm (OUT) ground terminal connected to case.

Plug filter, small, suitable for all electric applications.
 Filtra con spina, compatto, adatto per tutte le applicazioni elettroniche

Electrical Specifications:

Rated voltage (Vr) max 250 V to 400 Hz
Rated current (Ir)* referred to room temp. = 40°C
Leakage current (Il) ≤ 0.8 mA
Voltage test (Zs.) line to ground 2250 Vdc
Climatic category HPF (25/085/21) -25°C to +85°C

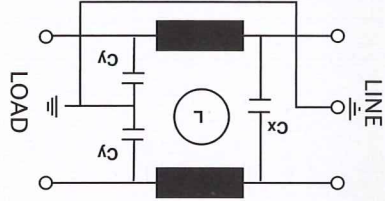
Caratteristiche tecniche:

Costruzione Custodia metallica (presa rete IEC320).
Terminali Ingresso presa rete IEC 320, uscita Faston 6,3 x 0,8 mm terminale di terra collegato al contenitore.

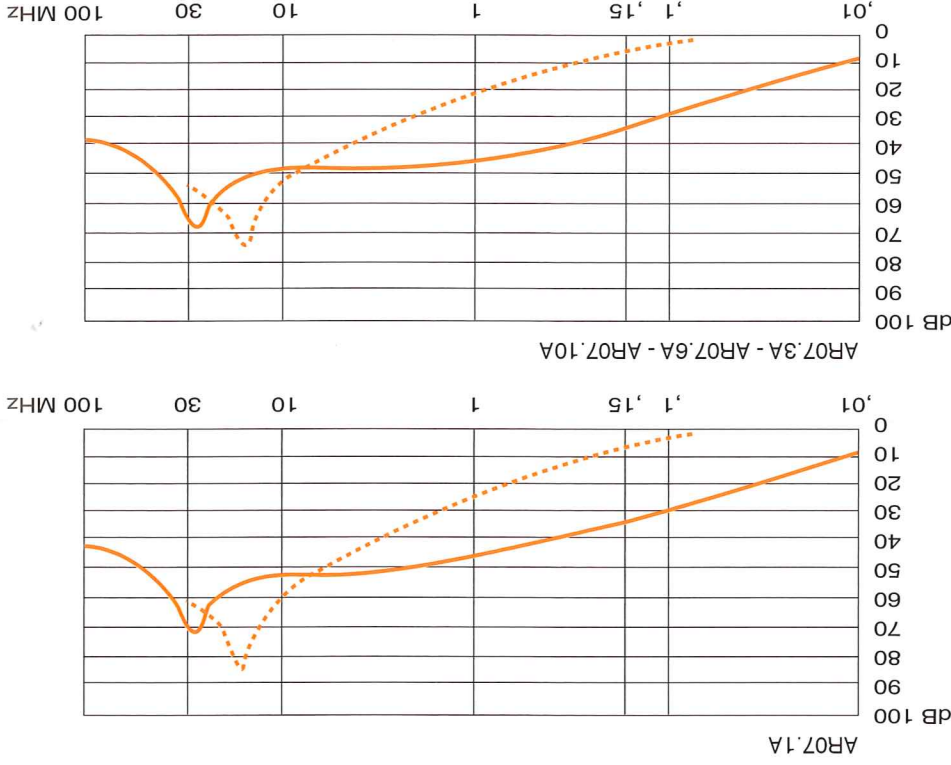
Caratteristiche elettriche:

Tensione nominale (Vr) max. 250V~ a 400 Hz
Corrente nominale (Ir)* riferita ad una temp. di 40°C
Corrente di fuga (Il) ≤ 0,8 mA
Tensione di prova (Zs.) linea e massa 2250 Vdc
Categoria climatica HPF (25/085/21) -25°C a +85°C

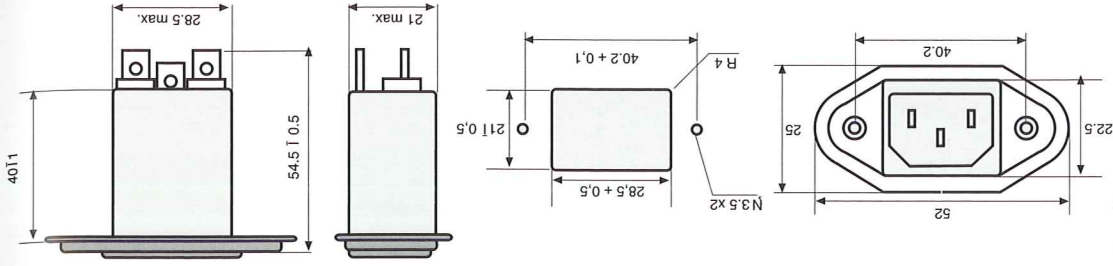
Circuit diagram



Code	IR (A)*	Cx (µF)	Cy (pF)	L (mH)
AR07.1A	1	0,1	3300	3,7
AR07.3A	3	0,1	3300	1,8
AR07.6A	6	0,1	3300	0,7
AR07.10A	10	0,1	3300	0,3



Dimensions



Mechanical Specifications:

Manufacture plastic case or metal case and line connector with 1 or 2 fuses. Internal components sealed with self-extinguishing resin Vo

Electrical Specifications:

Rated voltage (Vr) max 250 V to 400 Hz
Rated current (Ir)* referred to room temp. = 40°C
Leakage current (Il) ≤ 0,6 mA circuit C ≤ 0,02 mA
Voltage test (Zs.) line to ground 3000Vdc
Climatic category HPF (25/085/21) -25°C to +85°C

Plug filter with fuse, suitable for all applications, it can be personalized in case of circuits with many noises.
 Filtra con spina e fusibile, adatto per tutte le applicazioni, può essere personalizzato in quelle applicazioni!
 ove vi siano particolari problemi di disturbi.

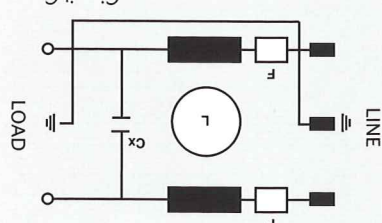
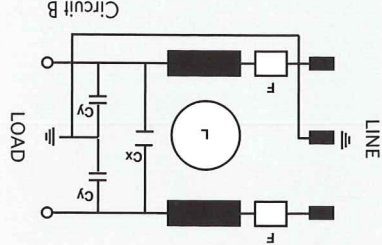
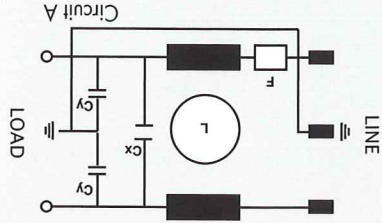
Caratteristiche tecniche:

Costruzione Custodia plastica o metallica e presa rete con 1 o 2 fusibili. Componenti interni sigillati con resina autoestinguente Vo

Caratteristiche elettriche:

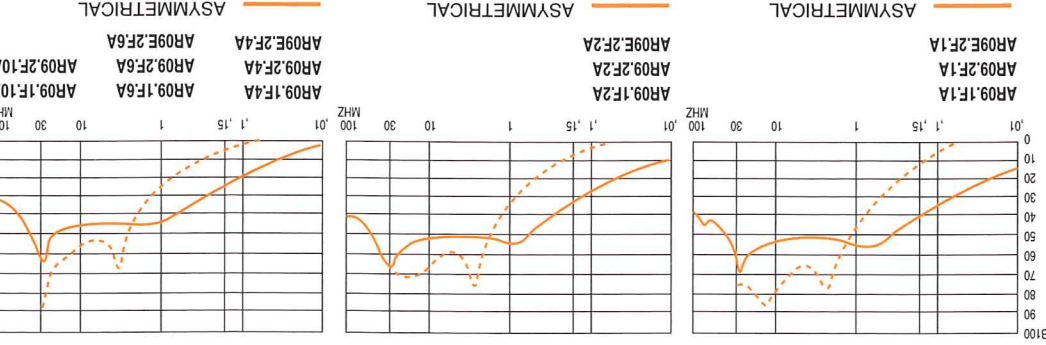
Tensione nominale (Vr) max. 250V~ a 400 Hz
Corrente nominale (Ir)* riferita ad una temp. di 40°C
Corrente di fuga (Il) ≤ 0,6 mA circuit C ≤ 0,02 mA
Tensione di prova (Zs.) linea e massa 3000Vdc
Categoria climatica HPF (25/085/21) -25°C a +85°C

Circuit diagram



Code	IR (A)*	Cx (µF)	Cy (pF)	L (mH)	Circuit
AR09.1F.1A..	1	0,1	2500	1	A
AR09.1F.6A..	6	0,1	2500	1	A
AR09.1F.2A..	2	0,1	2500	2	A
AR09.1F.4A..	4	0,1	2500	1	A
AR09.2F.1A..	1	0,1	2500	6	B
AR09.2F.2A..	2	0,1	2500	2	B
AR09.2F.4A..	4	0,1	2500	1	B
AR09.2F.6A..	6	0,1	2500	1	B
AR09.2F.10APL	10	0,1	2500	0,35	B
AR09.2F.2A..	2	0,1	2500	6	C
AR09.2F.4A..	4	0,1	2500	2	C
AR09.2F.6A..	6	0,1	2500	1	C
AR09.2F.10A..	10	0,1	2500	0,35	C
AR09.2F.2A..	2	0,1	2500	1	C
AR09.2F.4A..	4	0,1	2500	1	C
AR09.2F.6A..	6	0,1	2500	1	C

ME = Metal case
 PL = Plastic case



Dimensions

